



FradelSport

CATALOG
2022

FREE TIME

CUSTOM
SERVICE

CREATE
YOUR BRAND





ENJOY YOUR SELF

FREE TIME

//Tracksuit New York – Jacket Dyed (Premium)

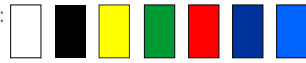
Fabric: 104.

Composition: 100% PES.

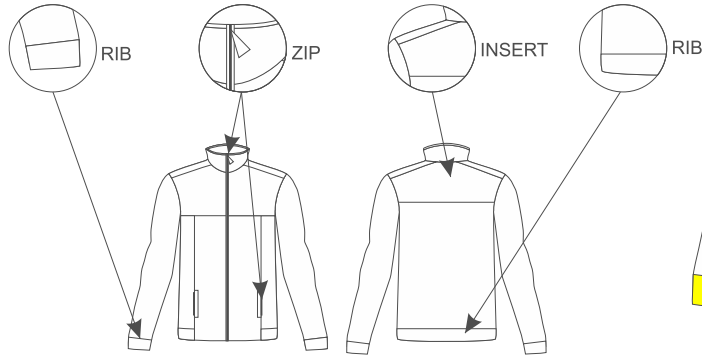
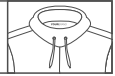
Weight: 200 (GR/M²).

Size: 6, 8, 10, 12, 14, XS, S, M, L, XL, 2XL, 3XL, 4XL.

Rib and fabrics – Available colors:



Additional:
Extra Hoody Dyed



check the colors of the zippers – Fronts + Pockets (p.118)

//Tracksuit Dortmund – Jacket Sublimated (Premium)

Fabric: 104.

Composition: 100% PES.

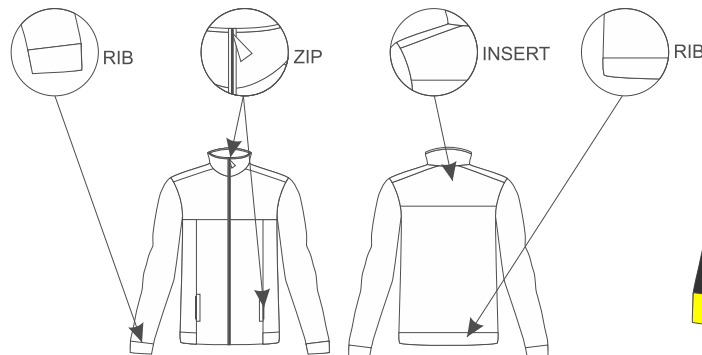
Weight: 200 (GR/M²).

Size: 6, 8, 10, 12, 14, XS, S, M, L, XL, 2XL, 3XL, 4XL.

Rib – Available colors:



Additional:
Extra Hoody
Sublimated



check the colors of the zippers – Fronts + Pockets (p.118)

//Tracksuit Milan – Jacket Sublimated/ Dyed (Premium)

Fabric: 104.

Composition: 100% PES.

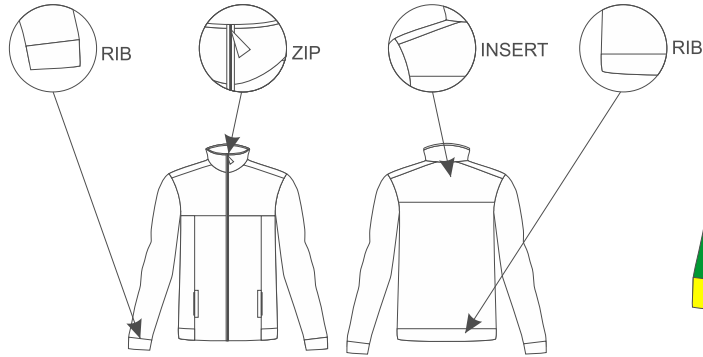
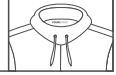
Weight: 200 (GR/M²).

Size: 6, 8, 10, 12, 14, XS, S, M, L, XL, 2XL, 3XL, 4XL.

Rib and fabrics – Available colors:



Additional:
Extra Hoody Dyed
or Sublimated



check the colors of the zippers – Fronts + Pockets (p.118)

//Tracksuit Marbella – Jacket Dyed (Basic)

NEW

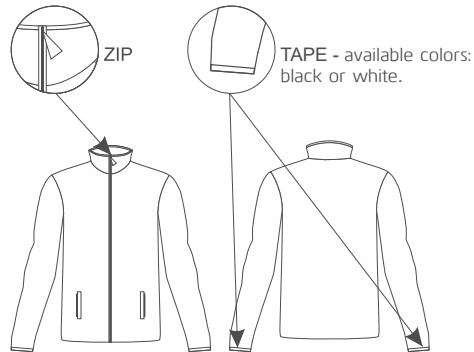
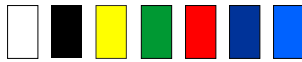
Fabric: 104.

Composition: 100% PES.

Weight: 200 (GR/M²).

Size: 6, 8, 10, 12, 14, XS, S, M, L, XL, 2XL, 3XL, 4XL.

Fabrics – Available colors:



check the colors of the zippers – Fronts (p.118)

//Tracksuit Benidorm – Jacket Sublimated (Basic)

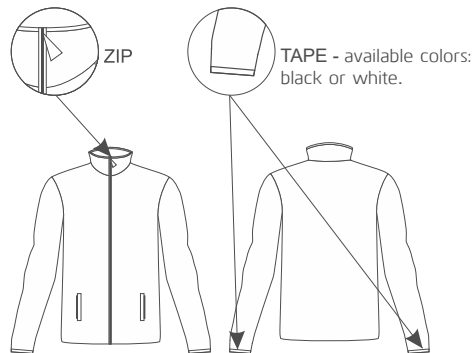
NEW

Fabric: 104.

Composition: 100% PES.

Weight: 200 (GR/M²).

Size: 6, 8, 10, 12, 14, XS, S, M, L, XL, 2XL, 3XL, 4XL.



check the colors of the zippers – Fronts (p.118)

//Hoody Sweatshirt Almeria – Sublimated

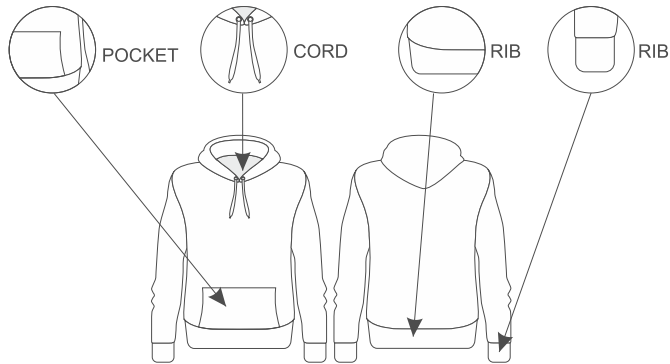
Fabric: 1551.

Composition: 100% PES.

Weight: 255 (GR/M²).

Size: 6, 8, 10, 12, 14, XS, S, M, L, XL, 2XL, 3XL, 4XL.

Rib – Available colors:



//Hoody Sweatshirt Tavira – Sublimated Full Zip

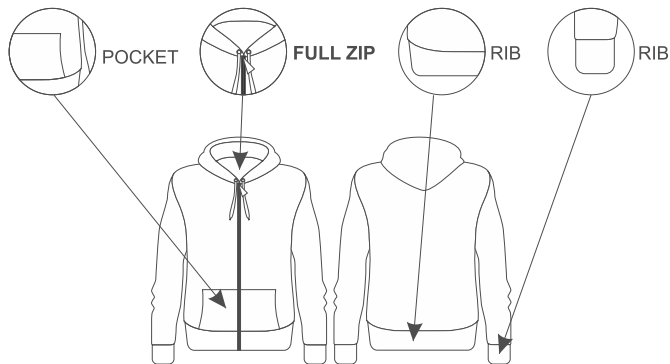
Fabric: 1551.

Composition: 100% PES.

Weight: 255 (GR/M²).

Size: 6, 8, 10, 12, 14, XS, S, M, L, XL, 2XL, 3XL, 4XL.

Rib – Available colors:



check the colors of the zippers – Fronts (p.118)

NEW

NEW

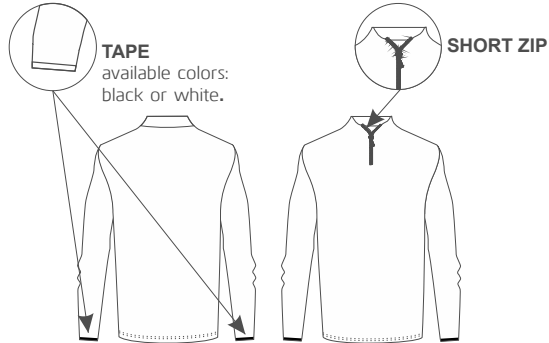
//Training Sweatshirt Vidago – Short Zip

Fabric: Merlin.

Composition: 94% PES. 6% EA.

Weight: 250 (GR/M²).

Size: 6, 8, 10, 12, 14, XS, S, M, L, XL, 2XL, 3XL, 4XL.



check the colors of the zippers – Fronts (p.118)

NEW

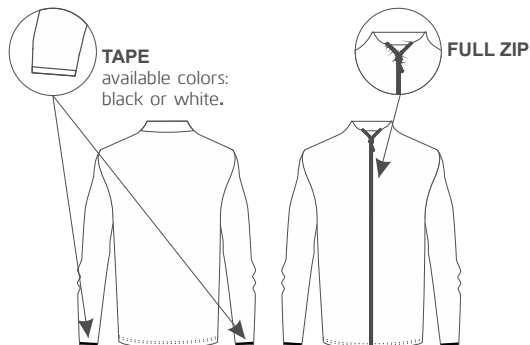
//Training Sweatshirt Troia – Full Zip

Fabric: Merlin.

Composition: 94% PES. 6% EA.

Weight: 250 (GR/M²).

Size: 6, 8, 10, 12, 14, XS, S, M, L, XL, 2XL, 3XL, 4XL.



check the colors of the zippers – Fronts (p.118)

NEW

//Sweatshirt Ericeira - Round Collar

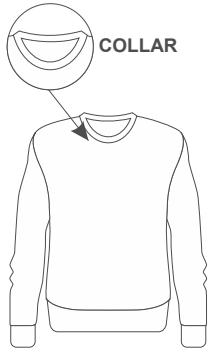
Fabric: 1551.

Composition: 100% PES.

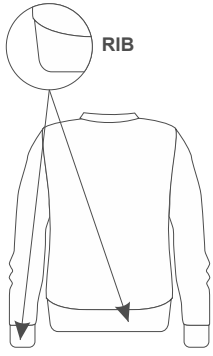
Weight: 255 (GR/M²).

Size: 6, 8, 10, 12, 14, XS, S, M, L, XL, 2XL, 3XL, 4XL.

Rib - Available colors:



COLLAR



RIB



//Sweatshirt Caxinas - Full Zip

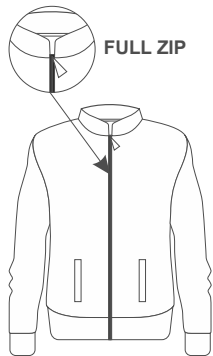
Fabric: 1551.

Composition: 100% PES.

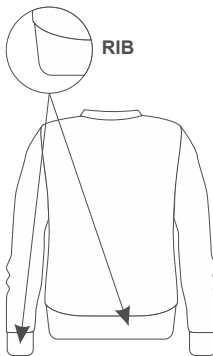
Weight: 255 (GR/M²).

Size: 6, 8, 10, 12, 14, XS, S, M, L, XL, 2XL, 3XL, 4XL.

Rib - Available colors:



FULL ZIP



RIB



NEW

check the colors of the zippers - Fronts + Pockets (p.118)

FREE TIME

//Sweatshirt Trofa - Full Zip

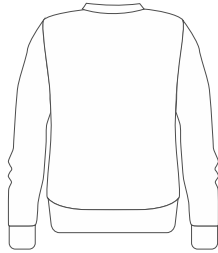
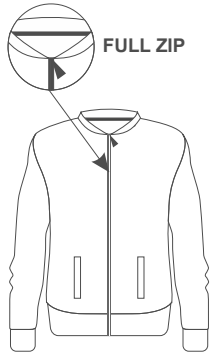
Fabric: Scuba.

Composition: 100% PES.

Weight: 255 (GR/M²).

Size: 6, 8, 10, 12, 14, XS, S, M, L, XL, 2XL, 3XL, 4XL.

NEW



check the colors of the zippers - Fronts (p.118)

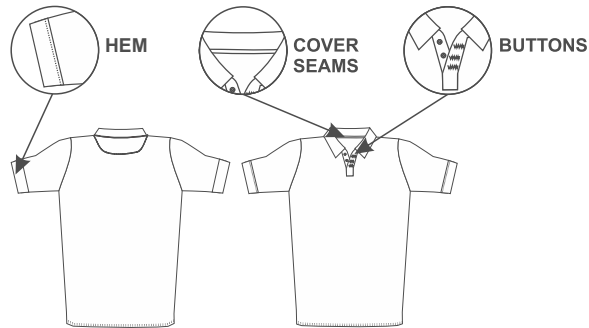
//Polo Basic Sintra – Sublimated Men

Fabric: 1800.

Composition: 100% PES.

Weight: 140 (GR/M²).

Size: 6, 8, 10, 12, 14, XS, S, M, L, XL, 2XL, 3XL, 4XL.



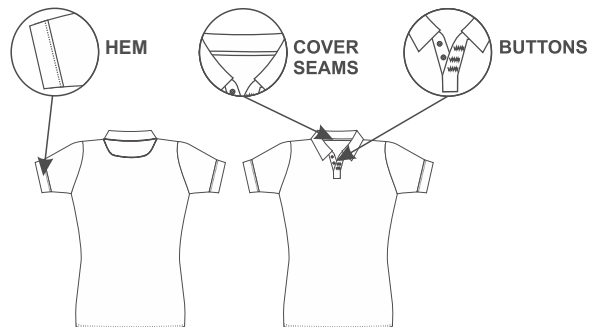
//Polo Basic Cascais – Sublimated Woman

Fabric: 1800.

Composition: 100% PES.

Weight: 140 (GR/M²).

Size: 6, 8, 10, 12, 14, XS, S, M, L, XL, 2XL, 3XL, 4XL.



//Thermal Shirt Winter Seia – Sublimated

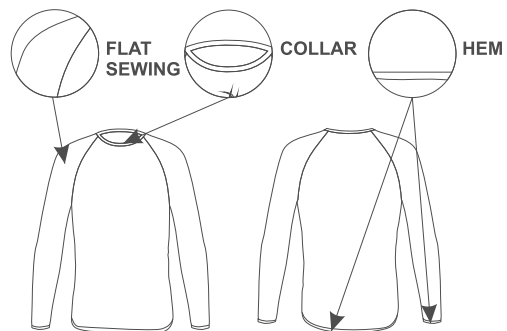
NEW

Fabric: Nava.

Composition: 84% PES. 16% EA LYCRA.

Weight: 190 (GR/M²).

Size: 6, 8, 10, 12, 14, XS, S, M, L, XL, 2XL, 3XL, 4XL.



//Thermal Shirt Summer Nazaré – Sublimated

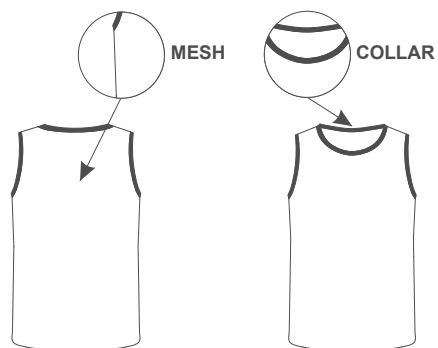
NEW

Fabric: Tour Ligeró.

Composition: 92% PES. 8% EA.

Weight: 155 (GR/M²).

Size: 6, 8, 10, 12, 14, XS, S, M, L, XL, 2XL, 3XL, 4XL.



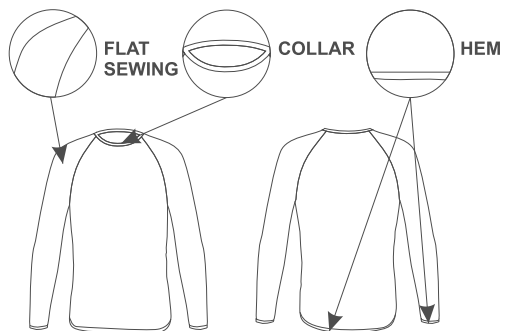
//Thermal Shirt Winter Luso - White

Fabric: Nava.

Composition: 84% PES. 16% EA LYCRA.

Weight: 190 (GR/M²).

Size: 6, 8, 10, 12, 14, XS, S, M, L, XL, 2XL, 3XL, 4XL.



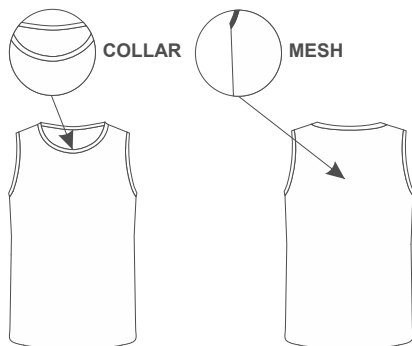
//Thermal Shirt Summer Belmonte - White

Fabric: Tour Ligerò.

Composition: 92% PES. 8% EA.

Weight: 155 (GR/M²).

Size: 6, 8, 10, 12, 14, XS, S, M, L, XL, 2XL, 3XL, 4XL.



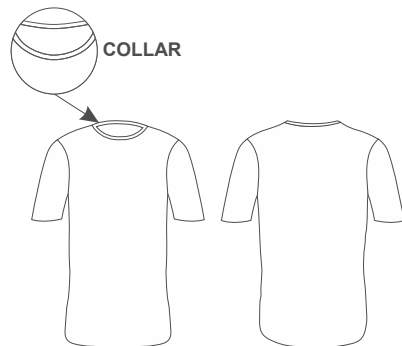
//Thermal Shirt Short Sleeve Monforte - White

Fabric: Tour Ligeró.

Composition: 92% PES. 8% EA.

Weight: 155 (GR/M²).

Size: 6, 8, 10, 12, 14, XS, S, M, L, XL, 2XL, 3XL, 4XL.



//Tracksuit Pants Batalha - Dyed

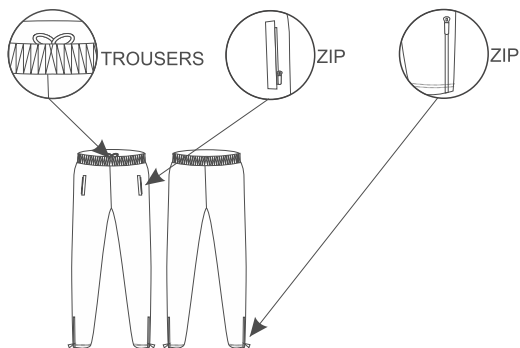
Fabric: 104.

Composition: 100% PES.

Weight: 200 (GR/M²).

Size: 6, 8, 10, 12, 14, XS, S, M, L, XL, 2XL, 3XL, 4XL.

Fabrics - Available colors:



check the colors of the zippers - Legs + Pockets (p.118)

//Tracksuit Pants Vilamoura - Dyed

Fabric: 108.816

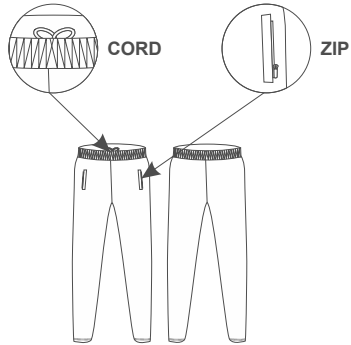
Composition: 87% PES. 13% ELASTANO.

Weight: 250 (GR/M²).

Size: 6, 8, 10, 12, 14, XS, S, M, L, XL, 2XL, 3XL, 4XL.

Leg bottom without zip.

Fabrics - Available colors:



check the colors of the zippers - Legs + Pockets (p.118)

//Tracksuit Pants Boticas

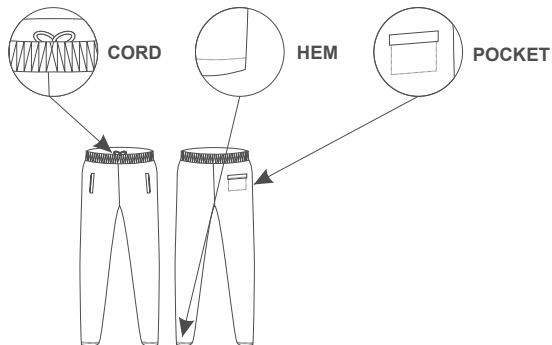
Fabric: 4201.

Composition: 50% PES. 50% CO.

Weight: 250 (GR/M²).

Size: 6, 8, 10, 12, 14, XS, S, M, L, XL, 2XL, 3XL, 4XL.

Fabrics - Available colors:



NEW

NEW

//Shorts Montalegre

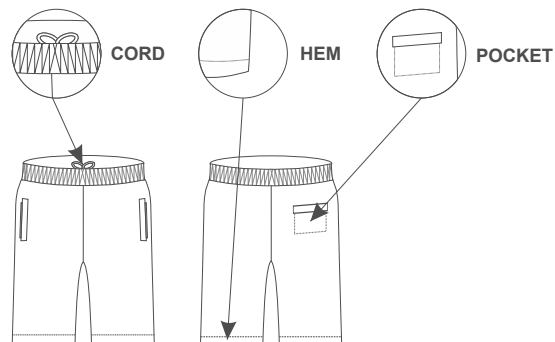
Fabric: 4201.

Composition: 50% PES. 50% CO.

Weight: 250 (GR/M²).

Size: 6, 8, 10, 12, 14, XS, S, M, L, XL, 2XL, 3XL, 4XL.

Fabrics - Available colors:



check the colors of the zippers - Pockets (p.118)

//Short Monsanto - Dyed

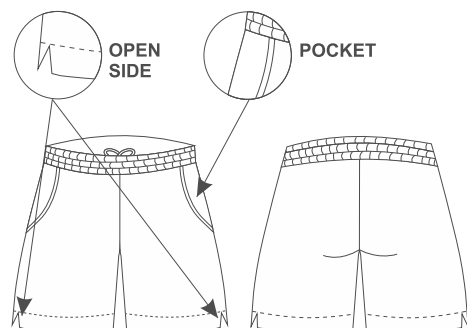
Fabric: 1400.

Composition:

Weight: 110 (GR/M²).

Size: 6, 8, 10, 12, 14, XS, S, M, L, XL, 2XL, 3XL, 4XL.

Fabrics - Available colors:



//Short Montijo - Sublimated

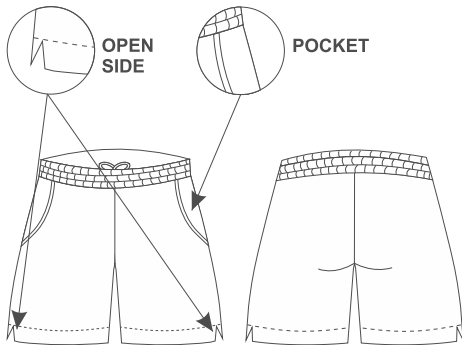
Fabric: 1400.

Composition: 100% PES.

Weight: 110 (GR/M²).

Size: 6, 8, 10, 12, 14, XS, S, M, L, XL, 2XL, 3XL, 4XL.

NEW



//Short Milfontes - Sublimated

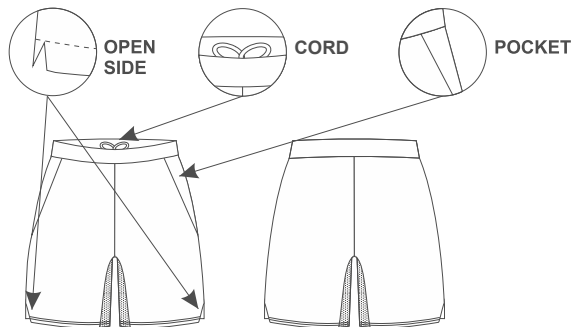
Fabric: Max Tafetan

Composition: 80% PA. 20% EA.

Weight: 105 (GR/M²).

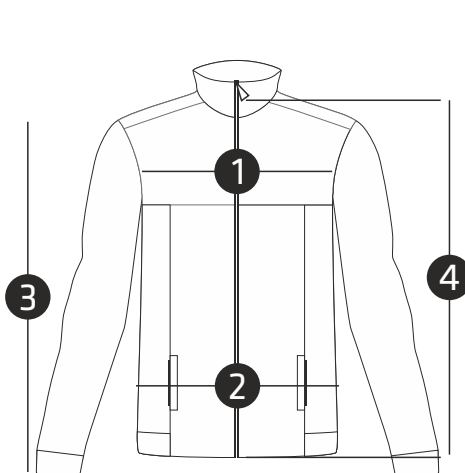
Size: 6, 8, 10, 12, 14, XS, S, M, L, XL, 2XL, 3XL, 4XL.

NEW



//Free Time Measurements

TRACKSUIT JACKET PREMIUM + BASIC



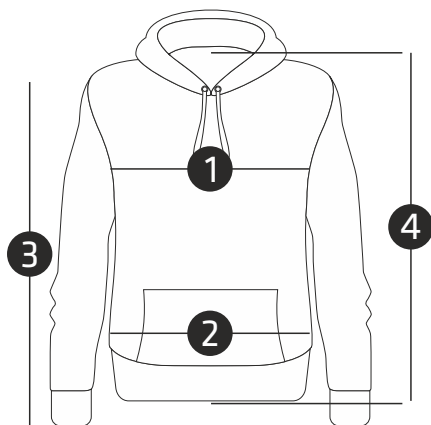
- ① CHEST
- ② WAIST
- ③ SLEEVE LENGTH
- ④ TOTAL HEIGHT

| | 4 YEARS | 6 YEARS | 8 YEARS | 10 YEARS | 12 YEARS | 14 YEARS | XS |
|-----------------|----------|----------|----------|----------|----------|----------|----------|
| ① CHEST | 59-61 CM | 62-65 CM | 66-69 CM | 70-73 CM | 74-76 CM | 77-80 CM | 81-85 CM |
| ② WAIST | 57-61 CM | 62-66 CM | 67-69 CM | 70-74 CM | 75-78 CM | 79-81 CM | 82-85 CM |
| ③ SLEEVE LENGTH | 45 CM | 49 CM | 53 CM | 57 CM | 61 CM | 65 CM | 69 CM |
| ④ TOTAL HEIGHT | 51,5 CM | 55,5 CM | 60,5 CM | 62,5 CM | 67,5 CM | 70,5 CM | 72,5 CM |

- ① CHEST
- ② WAIST
- ③ SLEEVE LENGTH
- ④ TOTAL HEIGHT

| | S | M | L | XL | 2XL | 3XL | 4XL |
|-----------------|----------|----------|-----------|------------|------------|------------|------------|
| ① CHEST | 86-90 CM | 91-95 CM | 96-100 CM | 101-104 CM | 105-108 CM | 109-112 CM | 113-116 CM |
| ② WAIST | 86-90 CM | 91-95 CM | 96-99 CM | 100-103 CM | 104-107 CM | 108-111 CM | 112-115 CM |
| ③ SLEEVE LENGTH | 70 CM | 71 CM | 72 CM | 73 CM | 74 CM | 75 CM | 76 CM |
| ④ TOTAL HEIGHT | 74,5 CM | 76 CM | 77,5 CM | 78,5 CM | 79,5 CM | 80,5 CM | 81,5 CM |

HOODY SWEATSHIRT + HOODY SWEATSHIRT FULL ZIP + SWEATSHIRT ROUND COLLAR



- ① CHEST
- ② WAIST
- ③ SLEEVE LENGTH
- ④ TOTAL HEIGHT

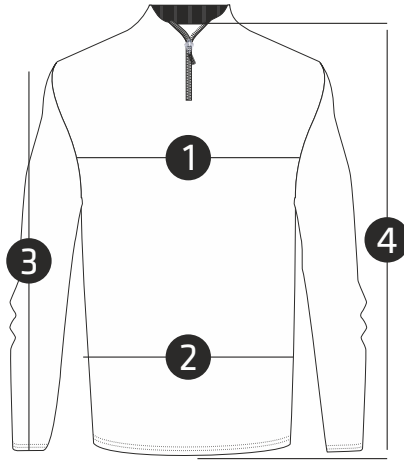
| | 4 YEARS | 6 YEARS | 8 YEARS | 10 YEARS | 12 YEARS | 14 YEARS | XS |
|-----------------|----------|----------|----------|----------|----------|----------|----------|
| ① CHEST | 52-56 CM | 57-61 CM | 62-66 CM | 67-70 CM | 71-75 CM | 76-80 CM | 81-85 CM |
| ② WAIST | 50-54 CM | 55-59 CM | 60-64 CM | 65-69 CM | 70-74 CM | 75-79 CM | 79-83 CM |
| ③ SLEEVE LENGTH | 46 CM | 51 CM | 55,5 CM | 60 CM | 64 CM | 66 CM | 67 CM |
| ④ TOTAL HEIGHT | 46 CM | 49 CM | 52 CM | 56 CM | 60 CM | 63 CM | 65 CM |

- ① CHEST
- ② WAIST
- ③ SLEEVE LENGTH
- ④ TOTAL HEIGHT

| | S | M | L | XL | 2XL | 3XL | 4XL |
|-----------------|----------|----------|----------|------------|------------|------------|------------|
| ① CHEST | 86-90 CM | 91-95 CM | 96-99 CM | 100-103 CM | 104-107 CM | 108-111 CM | 112-115 CM |
| ② WAIST | 84-88 CM | 89-92 CM | 93-96 CM | 97-100 CM | 101-104 CM | 105-108 CM | 109-112 CM |
| ③ SLEEVE LENGTH | 68 CM | 69 CM | 70 CM | 71 CM | 72 CM | 73 CM | 74 CM |
| ④ TOTAL HEIGHT | 67 CM | 69 CM | 71 CM | 73 CM | 75 CM | 76 CM | 77 CM |

//Free Time Measurements

TRAINING SWEATSHIRT SHORT ZIP + FULL ZIP



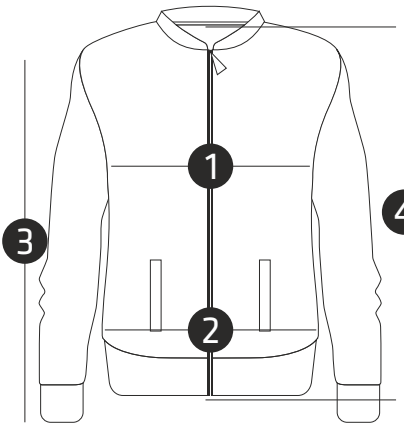
- ① CHEST
- ② WAIST
- ③ SLEEVE LENGTH
- ④ TOTAL HEIGHT

| 6 YEARS | 8 YEARS | 10 YEARS | 12 YEARS | 14 YEARS | XS | S |
|----------|----------|----------|----------|----------|----------|----------|
| 61-64 CM | 65-68 CM | 69-72 CM | 73-76 CM | 77-80 CM | 81-85 CM | 86-90 CM |
| 58-61 CM | 62-65 CM | 66-69 CM | 70-73 CM | 74-78 CM | 79-83 CM | 84-88 CM |
| 54,5 CM | 58 CM | 62,5 CM | 66,5 CM | 68,5 CM | 69,5 CM | 70,5 CM |
| 55 CM | 59 CM | 63 CM | 67 CM | 70 CM | 72 CM | 75 CM |

- ① CHEST
- ② WAIST
- ③ SLEEVE LENGTH
- ④ TOTAL HEIGHT

| M | L | XL | 2XL | 3XL | 4XL |
|----------|----------|-----------|------------|------------|------------|
| 91-94 CM | 95-98 CM | 99-103 CM | 104-107 CM | 108-111 CM | 112-115 CM |
| 89-92 CM | 93-97 CM | 98-102 CM | 103-107 CM | 108-111 CM | 112-115 CM |
| 71,5 CM | 72,5 CM | 73,5 CM | 74,5 CM | 75,5 CM | 76,5 CM |
| 77 CM | 78 CM | 80 CM | 82 CM | 83 CM | 84 CM |

SWEATSHIRT FULL ZIP - CAXINAS + SWEATSHIRT FULL ZIP - TROFA



- ① CHEST
- ② WAIST
- ③ SLEEVE LENGTH
- ④ TOTAL HEIGHT

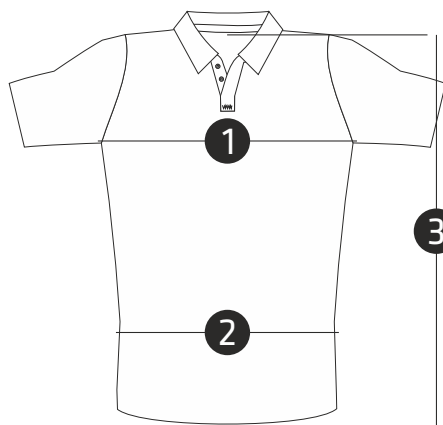
| 4 YEARS | 6 YEARS | 8 YEARS | 10 YEARS | 12 YEARS | 14 YEARS | XS |
|----------|----------|----------|----------|----------|----------|----------|
| 57-60 CM | 61-64 CM | 65-68 CM | 69-72 CM | 73-76 CM | 77-80 CM | 81-85 CM |
| 52-58 CM | 59-62 CM | 63-66 CM | 67-70 CM | 71-74 CM | 75-78 CM | 79-82 CM |
| 53 CM | 53 CM | 57 CM | 60 CM | 64 CM | 66 CM | 68 CM |
| 52 CM | 52 CM | 57 CM | 61 CM | 65 CM | 68 CM | 70 CM |

- ① CHEST
- ② WAIST
- ③ SLEEVE LENGTH
- ④ TOTAL HEIGHT

| S | M | L | XL | 2XL | 3XL | 4XL |
|----------|----------|----------|-----------|------------|------------|------------|
| 86-90 CM | 91-94 CM | 95-98 CM | 99-102 CM | 103-106 CM | 107-110 CM | 111-114 CM |
| 83-86 CM | 88-91 CM | 92-95 CM | 96-99 CM | 100-103 CM | 104-107 CM | 108-111 CM |
| 69 CM | 70 CM | 71 CM | 72 CM | 73 CM | 74 CM | 75 CM |
| 72 CM | 74 CM | 76 CM | 78 CM | 80 CM | 82 CM | 84 CM |

//Free Time Measurements

POLO BASIC - MEN



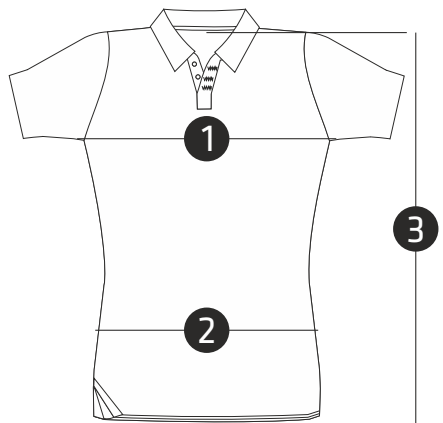
- ① CHEST
- ② WAIST
- ③ TOTAL HEIGHT

| 4 YEARS | 6 YEARS | 8 YEARS | 10 YEARS | 12 YEARS | 14 YEARS | XS |
|----------|----------|----------|----------|----------|----------|----------|
| 55-58 CM | 59-62 CM | 63-66 CM | 67-70 CM | 71-74 CM | 75-79 CM | 80-84 CM |
| 57-60 CM | 61-64 CM | 65-68 CM | 69-71 CM | 72-75 CM | 76-79 CM | 80-84 CM |
| 49,5 CM | 53,5 CM | 57,5 CM | 61,5 CM | 64,5 CM | 68,5 CM | 71,5 CM |

- ① CHEST
- ② WAIST
- ③ TOTAL HEIGHT

| S | M | L | XL | 2XL | 3XL | 4XL |
|----------|----------|----------|-----------|------------|------------|------------|
| 85-89 CM | 90-93 CM | 94-97 CM | 98-101 CM | 102-105 CM | 106-109 CM | 110-113 CM |
| 85-89 CM | 90-93 CM | 94-97 CM | 98-101 CM | 102-105 CM | 106-109 CM | 110-113 CM |
| 73,5 CM | 75,5 CM | 77,5 CM | 79,5 CM | 81,5 CM | 83,5 CM | 85,5 CM |

POLO BASIC - WOMAN



- ① CHEST
- ② WAIST
- ③ TOTAL HEIGHT

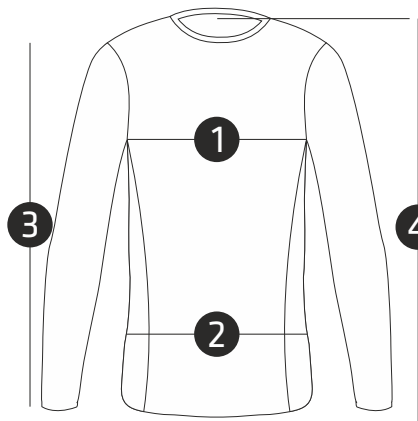
| 4 YEARS | 6 YEARS | 8 YEARS | 10 YEARS | 12 YEARS | 14 YEARS | XS |
|----------|----------|----------|----------|----------|----------|----------|
| 59-61 CM | 62-65 CM | 66-69 CM | 70-73 CM | 74-77 CM | 78-81 CM | 82-85 CM |
| 43-46 CM | 47-50 CM | 51-54 CM | 55-58 CM | 59-62 CM | 63-66 CM | 67-70 CM |
| 48,5 CM | 48,5 CM | 52,5 CM | 56,5 CM | 59,5 CM | 61,5 CM | 63,5 CM |

- ① CHEST
- ② WAIST
- ③ TOTAL HEIGHT

| S | M | L | XL | 2XL | 3XL | 4XL |
|----------|----------|----------|-----------|------------|------------|------------|
| 86-89 CM | 90-93 CM | 94-97 CM | 98-101 CM | 102-105 CM | 106-109 CM | 110-113 CM |
| 71-74 CM | 75-78 CM | 79-82 CM | 83-86 CM | 87-90 CM | 91-94 CM | 95-98 CM |
| 65,5 CM | 67,5 CM | 69,5 CM | 71,5 CM | 73,5 CM | 75,5 CM | 77,5 CM |

//Free Time Measurements

THERMAL SHIRT WINTER



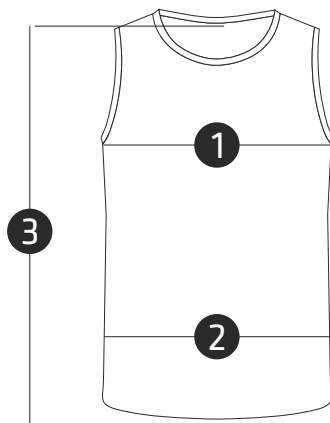
- ① CHEST
- ② WAIST
- ③ COMPRIENTO SLEEVE LENGTH
- ④ TOTAL HEIGHT

| | 4 YEARS | 6 YEARS | 8 YEARS | 10 YEARS | 12 YEARS | 14 YEARS | XS |
|----------------------------|----------|----------|----------|----------|----------|----------|----------|
| ① CHEST | 56-59 CM | 60-63 CM | 64-67 CM | 68-71 CM | 72-75 CM | 76-79 CM | 80-83 CM |
| ② WAIST | 57-60 CM | 61-65 CM | 66-69 CM | 70-73 CM | 74-77 CM | 78-81 CM | 82-85 CM |
| ③ COMPRIENTO SLEEVE LENGTH | 36 CM | 40 CM | 44 CM | 48 CM | 52 CM | 54 CM | 58 CM |
| ④ TOTAL HEIGHT | 39 CM | 43 CM | 47 CM | 51 CM | 55 CM | 59 CM | 60 CM |

- ① CHEST
- ② WAIST
- ③ COMPRIENTO SLEEVE LENGTH
- ④ TOTAL HEIGHT

| | S | M | L | XL | 2XL | 3XL | 4XL |
|----------------------------|----------|----------|----------|-----------|------------|------------|------------|
| ① CHEST | 84-88 CM | 89-92 CM | 93-96 CM | 97-100 CM | 101-104 CM | 105-108 CM | 109-112 CM |
| ② WAIST | 86-90 CM | 91-94 CM | 95-98 CM | 99-102 CM | 103-106 CM | 107-110 CM | 111-114 CM |
| ③ COMPRIENTO SLEEVE LENGTH | 60 CM | 61 CM | 62 CM | 63 CM | 64 CM | 65 CM | 66 CM |
| ④ TOTAL HEIGHT | 62 CM | 64 CM | 66 CM | 68 CM | 70 CM | 72 CM | 73 CM |

THERMAL SHIRT SUMMER



- ① CHEST
- ② WAIST
- ③ TOTAL HEIGHT

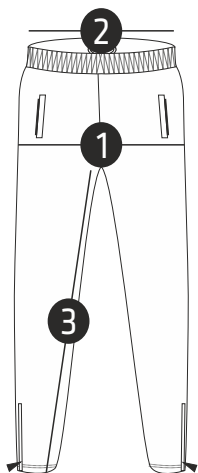
| | 4 YEARS | 6 YEARS | 8 YEARS | 10 YEARS | 12 YEARS | 14 YEARS | XS |
|----------------|----------|----------|----------|----------|----------|----------|----------|
| ① CHEST | 59-62 CM | 63-66 CM | 67-70 CM | 71-74 CM | 75-78 CM | 79-81 CM | 82-85 CM |
| ② WAIST | 56-58 CM | 59-62 CM | 63-66 CM | 67-70 CM | 71-74 CM | 75-78 CM | 79-82 CM |
| ③ TOTAL HEIGHT | 52 CM | 53 CM | 54 CM | 55 CM | 56 CM | 57 CM | 60 CM |

- ① CHEST
- ② WAIST
- ③ TOTAL HEIGHT

| | S | M | L | XL | 2XL | 3XL | 4XL |
|----------------|----------|----------|----------|----------|------------|------------|------------|
| ① CHEST | 86-89 CM | 90-93 CM | 94-96 CM | 97-99 CM | 100-102 CM | 103-105 CM | 106-108 CM |
| ② WAIST | 83-86 CM | 87-90 CM | 91-93 CM | 94-96 CM | 97-99 CM | 100-102 CM | 103-105 CM |
| ③ TOTAL HEIGHT | 61,5 CM | 63,5 CM | 66 CM | 68 CM | 70 CM | 72 CM | 74 CM |

//Free Time Measurements

TRACKSUIT PANTS



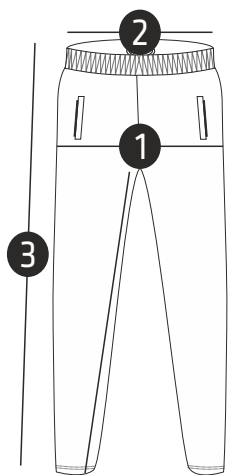
- ① HIP
- ② WAIST
- ③ INSIDE LEG HEIGHT

| | 4 YEARS | 6 YEARS | 8 YEARS | 10 YEARS | 12 YEARS | 14 YEARS | XS |
|---------------------|----------|----------|----------|----------|----------|----------|----------|
| ① HIP | 59-62 CM | 63-66 CM | 67-70 CM | 71-74 CM | 75-78 CM | 79-82 CM | 83-87 CM |
| ② WAIST | 59-62 CM | 63-66 CM | 67-70 CM | 71-74 CM | 75-78 CM | 79-82 CM | 83-87 CM |
| ③ INSIDE LEG HEIGHT | 52 CM | 56 CM | 60 CM | 64 CM | 68 CM | 71,5 CM | 74,5 CM |

- ① HIP
- ② WAIST
- ③ INSIDE LEG HEIGHT

| | S | M | L | XL | 2XL | 3XL | 4XL |
|---------------------|----------|----------|-----------|------------|------------|------------|------------|
| ① HIP | 88-92 CM | 93-96 CM | 97-100 CM | 101-104 CM | 105-108 CM | 109-112 CM | 113-116 CM |
| ② WAIST | 88-92 CM | 93-97 CM | 98-101 CM | 102-105 CM | 106-109 CM | 110-113 CM | 114-117 CM |
| ③ INSIDE LEG HEIGHT | 75,5 CM | 76,5 CM | 77,5 CM | 78,5 CM | 79,5 CM | 80,5 CM | 81,5 CM |

PANTS BOTICAS



- ① HIP
- ② WAIST
- ③ TOTAL HEIGHT

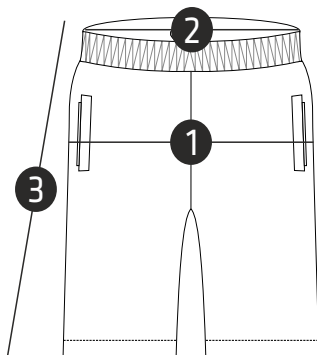
| | 4 YEARS | 6 YEARS | 8 YEARS | 10 YEARS | 12 YEARS | 14 YEARS | XS |
|----------------|----------|----------|----------|----------|----------|----------|----------|
| ① HIP | 58-61 CM | 62-65 CM | 66-69 CM | 70-73 CM | 74-77 CM | 78-82 CM | 83-87 CM |
| ② WAIST | 55-58 CM | 59-62 CM | 63-66 CM | 67-70 CM | 71-74 CM | 75-78 CM | 79-83 CM |
| ③ TOTAL HEIGHT | 71 CM | 73 CM | 78 CM | 83 CM | 88 CM | 93 CM | 98 CM |

- ① HIP
- ② WAIST
- ③ TOTAL HEIGHT

| | S | M | L | XL | 2XL | 3XL | 4XL |
|----------------|----------|----------|-----------|------------|------------|------------|------------|
| ① HIP | 88-92 CM | 93-96 CM | 97-100 CM | 101-104 CM | 105-108 CM | 109-112 CM | 113-116 CM |
| ② WAIST | 84-87 CM | 88-92 CM | 93-96 CM | 97-100 CM | 101-104 CM | 105-108 CM | 109-112 CM |
| ③ TOTAL HEIGHT | 101 CM | 103 CM | 105 CM | 107 CM | 109 CM | 110,5 CM | 112 CM |

//Free Time Measurements

SHORTS MONTALEGRE



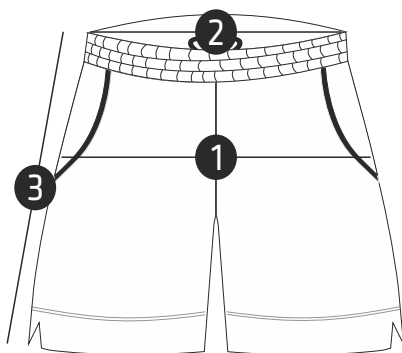
- ① HIP
- ② WAIST
- ③ TOTAL HEIGHT

| | 4 YEARS | 6 YEARS | 8 YEARS | 10 YEARS | 12 YEARS | 14 YEARS | XS |
|----------------|----------|----------|----------|----------|----------|----------|----------|
| ① HIP | 58-61 CM | 62-65 CM | 66-69 CM | 70-73 CM | 74-77 CM | 78-82 CM | 83-87 CM |
| ② WAIST | 55-58 CM | 59-62 CM | 63-66 CM | 67-70 CM | 71-74 CM | 75-78 CM | 79-83 CM |
| ③ TOTAL HEIGHT | 32 CM | 34 CM | 36 CM | 38 CM | 41 CM | 43 CM | 45,5 CM |

- ① HIP
- ② WAIST
- ③ TOTAL HEIGHT

| | S | M | L | XL | 2XL | 3XL | 4XL |
|----------------|----------|----------|-----------|------------|------------|------------|------------|
| ① HIP | 88-92 CM | 93-96 CM | 97-100 CM | 101-104 CM | 105-108 CM | 109-112 CM | 113-116 CM |
| ② WAIST | 84-87 CM | 88-92 CM | 93-96 CM | 97-100 CM | 101-104 CM | 105-108 CM | 109-112 CM |
| ③ TOTAL HEIGHT | 47 CM | 48,5 CM | 50 CM | 51 CM | 52 CM | 52,5 CM | 53,5 CM |

SHORTS FREETIME



- ① HIP
- ② WAIST
- ③ TOTAL HEIGHT

| | 4 YEARS | 6 YEARS | 8 YEARS | 10 YEARS | 12 YEARS | 14 YEARS | XS |
|----------------|----------|----------|----------|----------|----------|----------|----------|
| ① HIP | 63-66 CM | 67-70 CM | 71-74 CM | 75-78 CM | 79-82 CM | 83-86 CM | 87-90 CM |
| ② WAIST | 61-64 CM | 65-68 CM | 69-72 CM | 73-76 CM | 77-80 CM | 81-84 CM | 85-89 CM |
| ③ TOTAL HEIGHT | 34,5 CM | 36 CM | 37,5 CM | 39 CM | 40,5 CM | 42 CM | 42 CM |

- ① HIP
- ② WAIST
- ③ TOTAL HEIGHT

| | S | M | L | XL | 2XL | 3XL | 4XL |
|----------------|----------|-----------|------------|------------|------------|------------|------------|
| ① HIP | 91-95 CM | 96-100 CM | 101-104 CM | 105-108 CM | 109-112 CM | 113-117 CM | 119-121 CM |
| ② WAIST | 86-90 CM | 91-95 CM | 96-99 CM | 100-103 CM | 104-107 CM | 108-111 CM | 112-115 CM |
| ③ TOTAL HEIGHT | 43,5 CM | 45 CM | 46,5 CM | 48 CM | 49,5 CM | 51 CM | 52,5 CM |

//Working Mode

//Five simple steps



We will send you the layout and our color palettes



Send us your layout for execution of a fabric sample



We sent a sample in real colors and measures for your approval

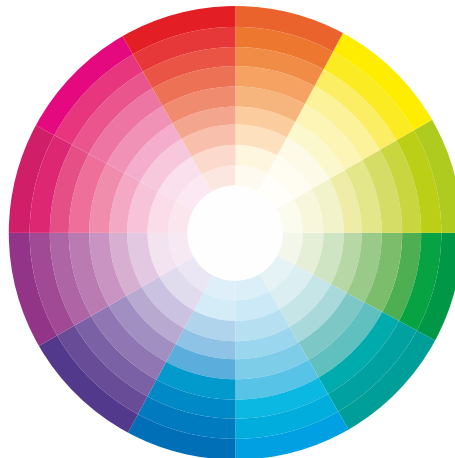


You send us the final aproval and the order for production.



You receive your production (4/6 weeks)

//Color palette. Illustration



//Zip Colors

Visible Zip (5mm)

COLORS



USED IN

- TRACKSUIT JACKETS
- TRAINING SWEATSHIRT
- SWEATSHIRT

PRODUCT FEATURES

Nylon invert zipper, open-end, semi-autolock.

Slider with plastic no logo puller with plastic top and bottom stopper.

Visible Zip (3mm)

COLORS



USED IN

- TRACKSUIT PANTS
- POLOS
- OPTIONAL POCKET
- POCKETS JACKETS

PRODUCT FEATURES

Nylon invert zipper, open-end, semi-autolock.

Slider with plastic no logo puller with plastic top and bottom stopper.

Invisible Zip (3mm)

COLORS



USED IN

- TRACKSUIT PANTS COTTON
- SHORT COTTON

PRODUCT FEATURES

Nylon invert and invisible zipper, closed-end, semi-autolock.

Lace tape with tear puller.



Fradelsport

Fradelsport

Fradelsport

ABOUT US

We, Fradelsport, a Portuguese company, start our business in 1988, in order to fill some needs in sports world.

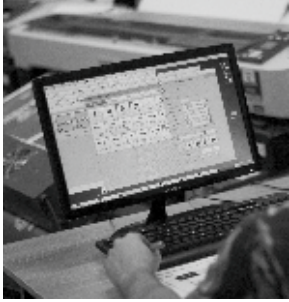
Using the best and latest technology allied with our strong know-how, we produce comfortable and irreverent sports equipment, adapted to the best sports performance.

Combining the best designs with top fabrics, is what make us different, presenting the market with several options for all kinds of sports.

Trusting our instincts, we take some risks by trying to make the best choices, all to make our products better and better.

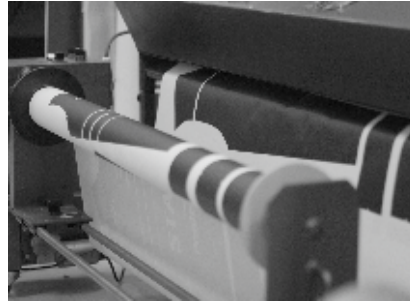
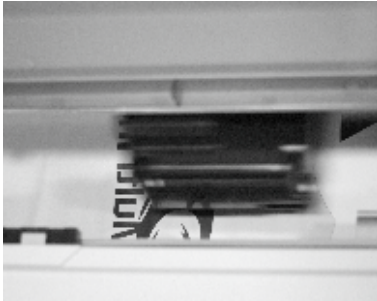
QUALITY, PERFECTION and RIGOR are our commitment!





PRINT

We transfer to the fabrics any idea.



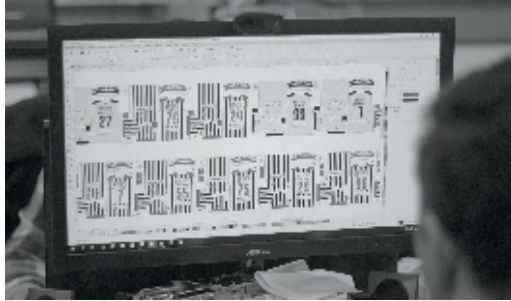
SUBLIMATION

It is the color printing method in fabric that gives you more freedom to create. You can use your own designs on any type of sports equipment without any limits. And all this without losing any capacities or properties of the fabrics.



The sublimation becomes permanent and does not disappear or fade, always keeping the colors bright and alive.

EXECUTIVE FILE / MOCKUP

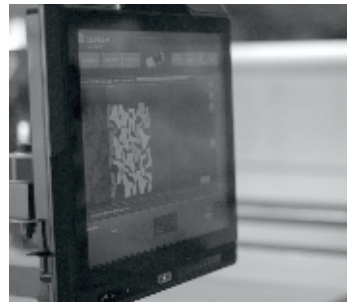


We have a team of designers able to create custom and exclusive designs, tailored to your needs.



CUT

The cutting sector is critical in the production process. Fradelsport have the latest technology that allows achieving the best quality of the product.



CONFECTION

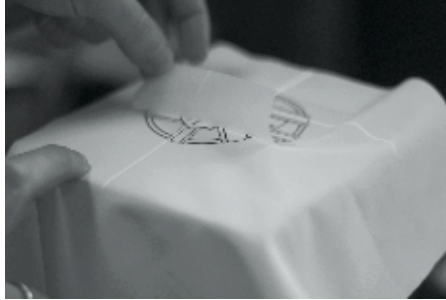


In combination with technology, we have a specialized stitching line, which allows us achieving the best quality..

TRANSFER

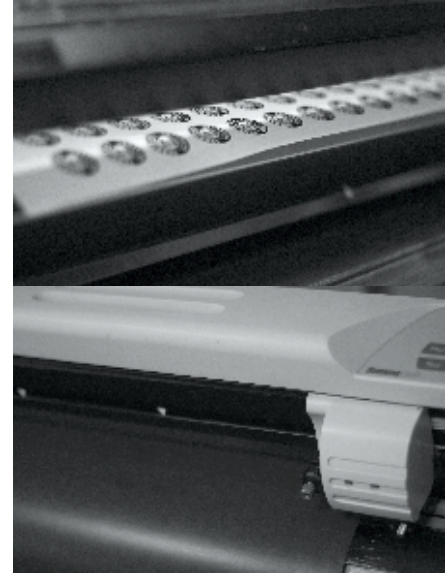


With use the best adhesive materials, resistant to washing and sun exposure.



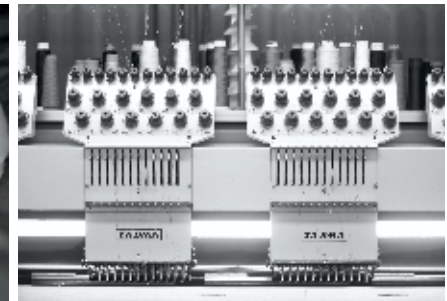
FLEX CUT FLEX PRINT/CUT

It is often used for numbering and personalization sports equipments.



EMBROIDERY

Is the most noble way to create design in the equipments.







Fradelsport

Address: Travessa S. Pedro nº9
4760-556 Fradelos - V. N. Famalicão | Portugal
Phone: +351 252 458 048 | +351 961 304 739
Email: geral@fradelsport.com
Website: www.fradelsport.com

NORTE2020
PROGRAMA OPERACIONAL REGIONAL DO NORTE

PORTUGAL
2020

 UNIÃO EUROPEIA
Fundo Europeu
de Desenvolvimento Regional

