



# FradelSport

CATALOG  
2022

SOCCER

CUSTOM  
SERVICE

CREATE  
YOUR BRAND



I  
LOVE  
MY  
TEAM



SOCCER

## //Shirt 1 Buenos Aires

Fabric: Lock + Mesh.

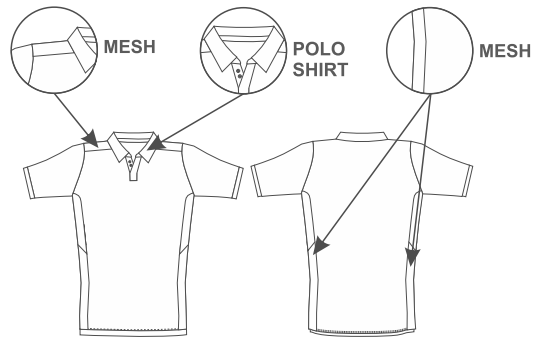
Composition: 100% PES.

Weight: 135 (GR/M<sup>2</sup>).

Inserts in mesh.

Microperforated shoulders and sides.

Size: 6, 8, 10, 12, 14, XS, S, M, L, XL, 2XL, 3XL, 4XL.



## //Shirt 3 Bogota

Fabric: Lock + Mesh.

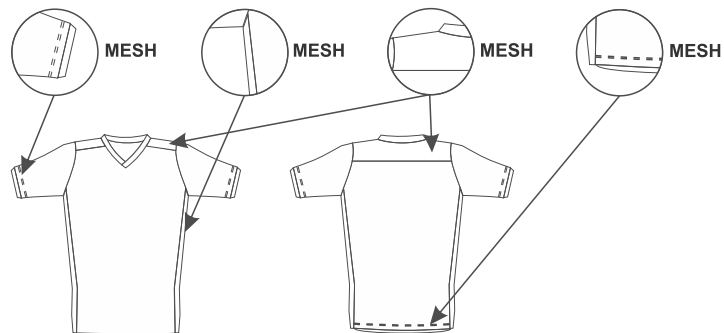
Composition: 100% PES.

Weight: 135 (GR/M<sup>2</sup>).

Inserts in mesh.

Microperforated shoulders and sides.

Size: 6, 8, 10, 12, 14, XS, S, M, L, XL, 2XL, 3XL, 4XL.



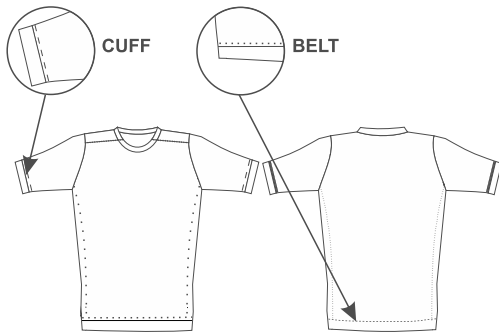
## //Shirt 5 Kiev

Fabric: Lock.

Composition: 100% PES.

Weight: 135 (GR/M<sup>2</sup>).

Size: 6, 8, 10, 12, 14, XS, S, M, L, XL, 2XL, 3XL, 4XL.



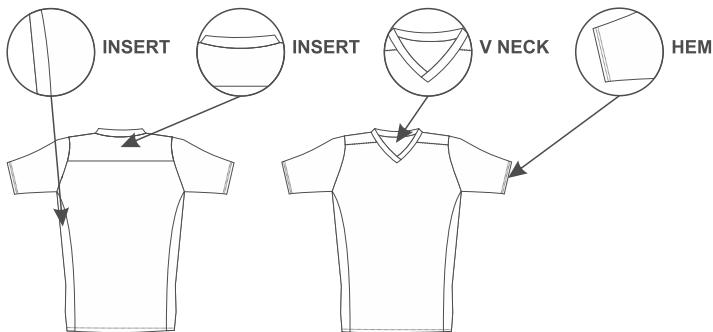
## //Shirt 6 Lisbon

Fabric: Lock.

Composition: 100% PES.

Weight: 135 (GR/M<sup>2</sup>).

Size: 6, 8, 10, 12, 14, XS, S, M, L, XL, 2XL, 3XL, 4XL.



## //Shirt 8 Turim

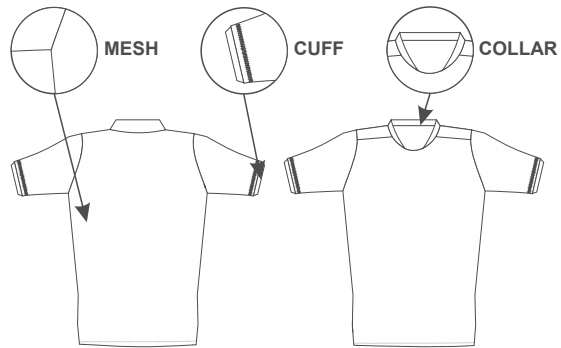
Fabric: Lock + Raven.

Composition: 100% PES.

Weight: 135 (GR/M<sup>2</sup>).

Inserts in mesh.

Size: 6, 8, 10, 12, 14, XS, S, M, L, XL, 2XL, 3XL, 4XL.



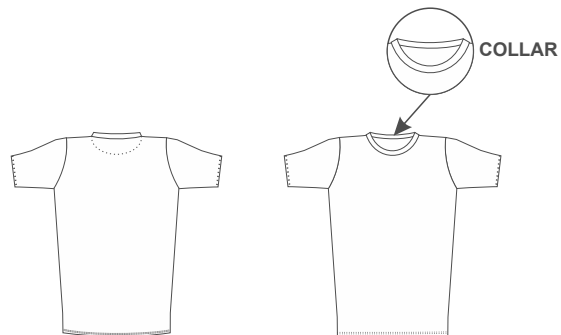
## //Shirt 10 Nicosia

Fabric: A - Manchester or Lock ; B - N1469.

Composition: 100% PES.

Weight: 135 (GR/M<sup>2</sup>).

Size: 6, 8, 10, 12, 14, XS, S, M, L, XL, 2XL, 3XL, 4XL.



## //Shirt 12 Viana

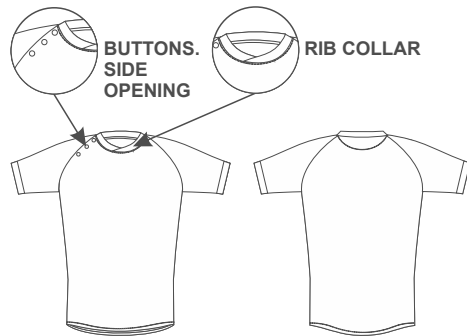
Fabric: Lock.

Composition: 100% PES.

Weight: 135 (GR/M<sup>2</sup>).

Shirt Kids.

Size: 3-6 months, 6-9 months, 9-12 months,  
1-2 years old, 3-4 years old, 5XS.



**NEW**

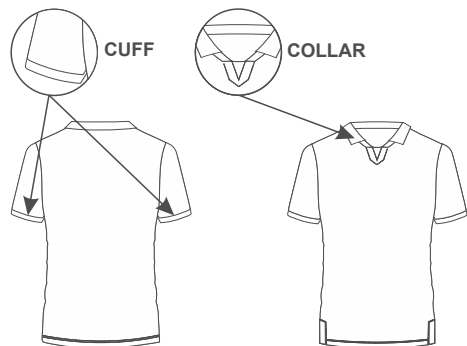
## //Shirt 13 Varzim

Fabric: Lock + Raven.

Composition: 100% PES.

Weight: 135 (GR/M<sup>2</sup>).

Size: 6, 8, 10, 12, 14, XS, S, M, L, XL, 2XL, 3XL, 4XL.

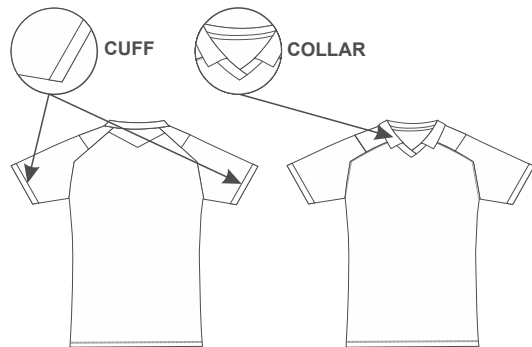


**NEW**



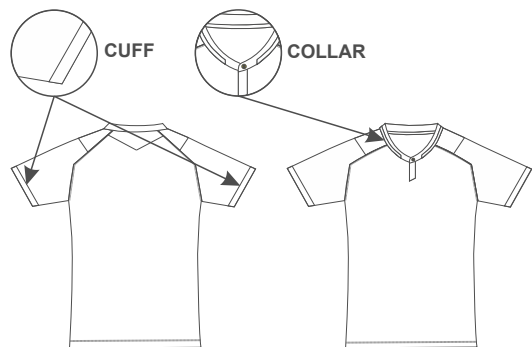
## //Shirt 14 Arouca

Fabric: Lock + Raven.  
Composition: 100% PES.  
Weight: 135 (GR/M<sup>2</sup>).  
Size: 6, 8, 10, 12, 14, XS, S, M, L, XL, 2XL, 3XL, 4XL.



## //Shirt 15 Leiria

Fabric: Lock + Raven.  
Composition: 100% PES.  
Weight: 135 (GR/M<sup>2</sup>).  
Size: 6, 8, 10, 12, 14, XS, S, M, L, XL, 2XL, 3XL, 4XL.



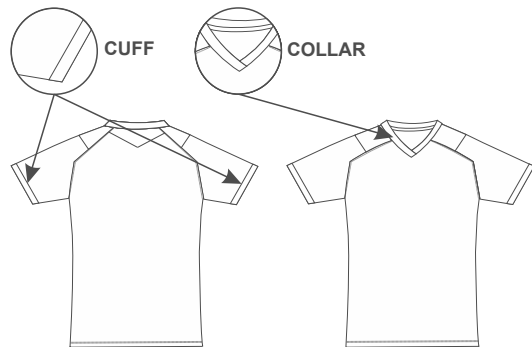
## //Shirt 16 Faro

Fabric: Lock.

Composition: 100% PES.

Weight: 135 (GR/M<sup>2</sup>).

Size: 6, 8, 10, 12, 14, XS, S, M, L, XL, 2XL, 3XL, 4XL.



## //Extra fabrics options

### //Licra 1248

Composition: \_\_\_\_.

Weight: 135 (GR/M<sup>2</sup>).

### //Licra Asteria

Composition: 86% PES. 14% EA.

Weight: 135 (GR/M<sup>2</sup>).

### //Licra Carmen

Composition: 92% PES. 8% EA.

Weight: 135 (GR/M<sup>2</sup>).

## //Shirt 17 Liverpool - Regla Sleeve

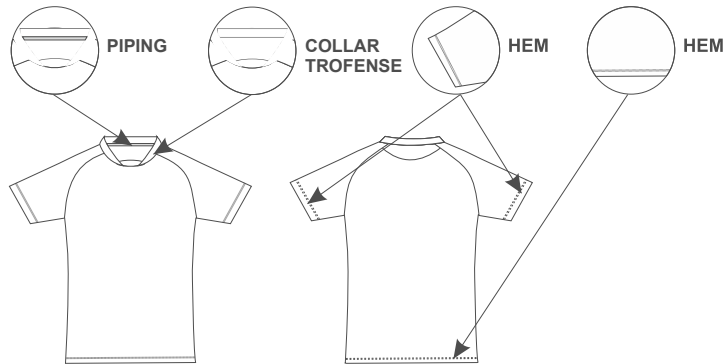
Fabric: Lock

Composition: 100% PES.

Weight: 135 (GR/M<sup>2</sup>).

Size: 6, 8, 10, 12, 14, XS, S, M, L, XL, 2XL, 3XL, 4XL.

**NEW**



## //Shirt 18 Newcastle - Regla Sleeve

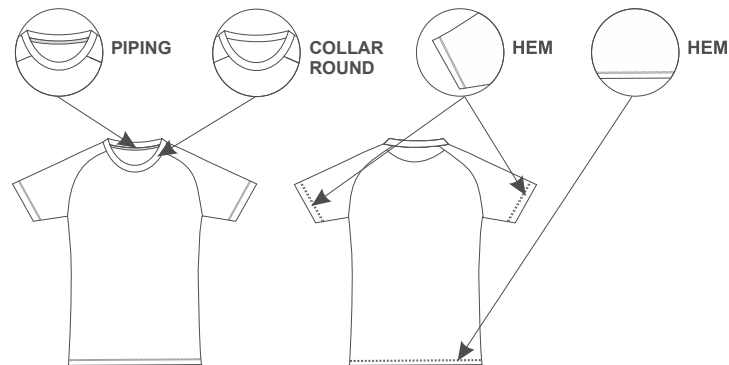
Fabric: Lock

Composition: 100% PES.

Weight: 135 (GR/M<sup>2</sup>).

Size: 6, 8, 10, 12, 14, XS, S, M, L, XL, 2XL, 3XL, 4XL.

**NEW**



# //Shirt 19 Norwich – Regla Sleeve

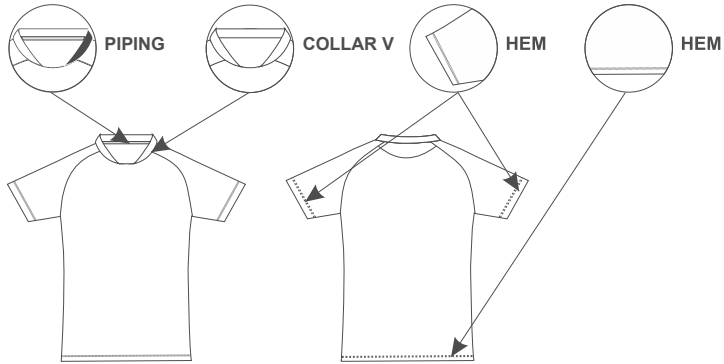
Fabric: Lock

Composition: 100% PES.

Weight: 135 (GR/M<sup>2</sup>).

Size: 6, 8, 10, 12, 14, XS, S, M, L, XL, 2XL, 3XL, 4XL.

**NEW**



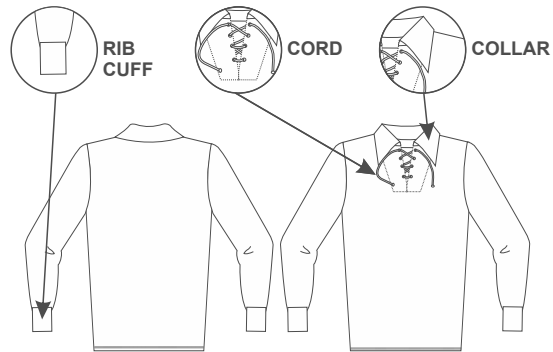
## //Shirt 20 Toledo

Fabric: 1704.

Composition: 30% Woll - 70% PES.

Weight: 160 (GR/M<sup>2</sup>).

Size: 6, 8, 10, 12, 14, XS, S, M, L, XL, 2XL, 3XL, 4XL.



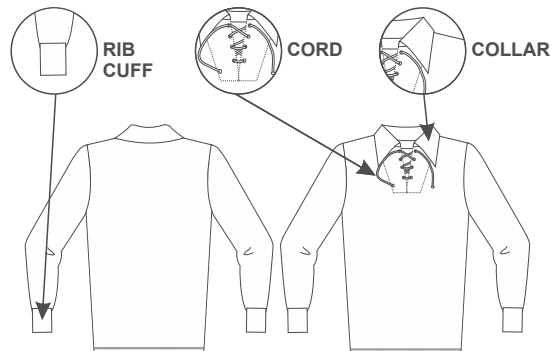
## //Shirt 21 Fradelos

Fabric: Woolprt.

Composition: 100% PES.

Weight: 170 (GR/M<sup>2</sup>).

Size: 6, 8, 10, 12, 14, XS, S, M, L, XL, 2XL, 3XL, 4XL.



## //Shorts 1 Vienna

Fabric: Lock + Mesh.

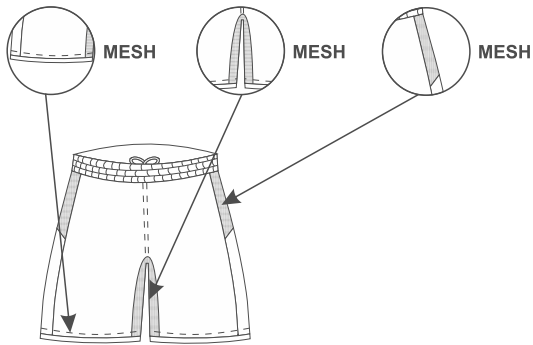
Composition: 100% PES.

Weight: 135 (GR/M<sup>2</sup>).

Inserts in mesh.

Inserts in mesh microperforated.

Size: 6, 8, 10, 12, 14, XS, S, M, L, XL, 2XL, 3XL, 4XL.



## //Shorts 2 Brussels

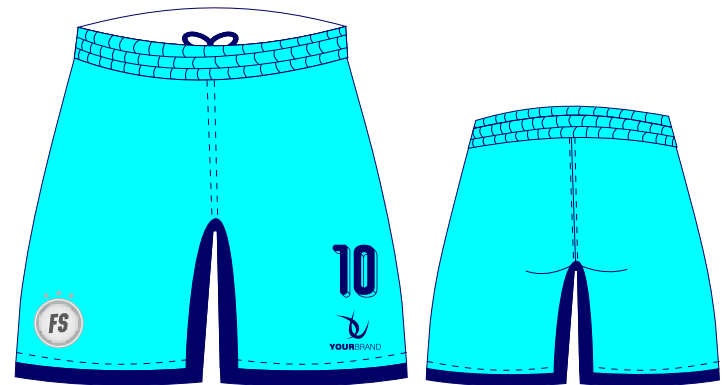
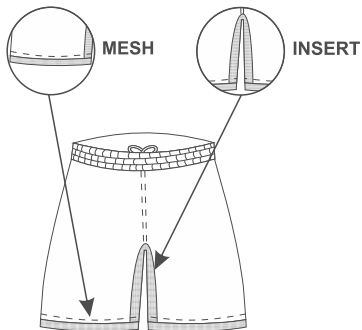
Fabric: Lock + Mesh.

Composition: 100% PES.

Weight: 135 (GR/M<sup>2</sup>).

Inserts in mesh microperforated.

Size: 6, 8, 10, 12, 14, XS, S, M, L, XL, 2XL, 3XL, 4XL.



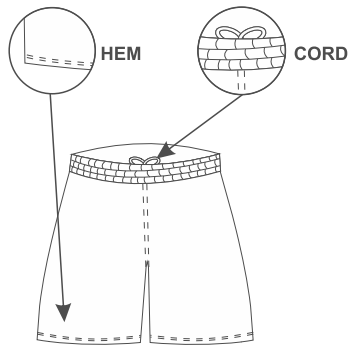
## //Shorts 3 Madrid

Fabric: Lock.

Composition: 100% PES.

Weight: 135 (GR/M<sup>2</sup>).

Size: 6, 8, 10, 12, 14, XS, S, M, L, XL, 2XL, 3XL, 4XL.



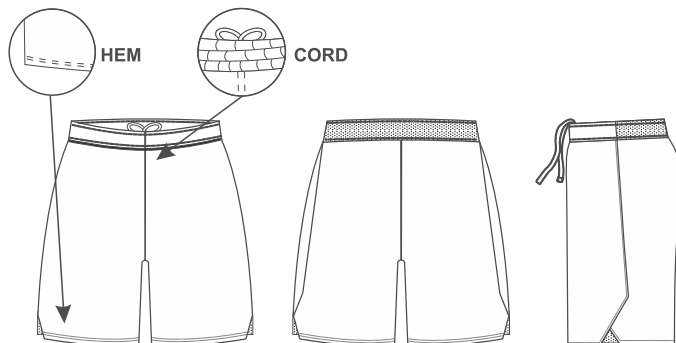
## //Short 4 Bologna

Fabric: Lock.

Composition: 100% PES.

Weight: 135 (GR/M<sup>2</sup>).

Size: 6, 8, 10, 12, 14, XS, S, M, L, XL, 2XL, 3XL, 4XL.



**NEW**

## //Shirt 2 Brasilia Woman

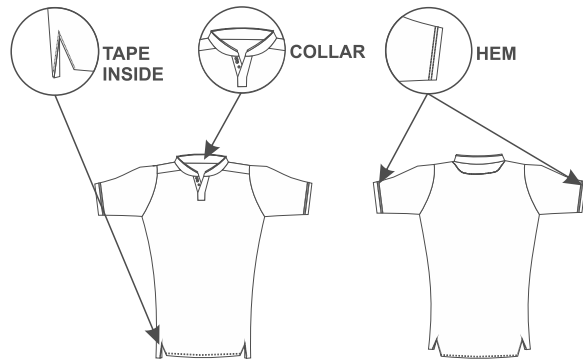
Fabric: Lock.

Composition: 100% PES.

Weight: 135 (GR/M<sup>2</sup>).

Inserts in mesh.

Size: 6, 8, 10, 12, 14, XS, S, M, L, XL, 2XL, 3XL, 4XL.



**NEW**

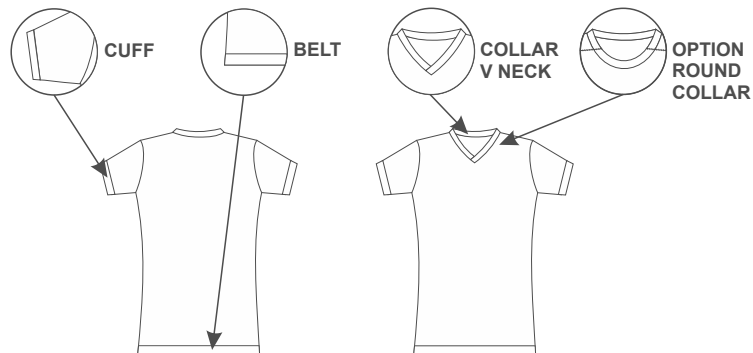
## //Shirt 5 Kiev Woman

Fabric: Lock.

Composition: 100% PES.

Weight: 135 (GR/M<sup>2</sup>).

Size: 6, 8, 10, 12, 14, XS, S, M, L, XL, 2XL, 3XL, 4XL.



**NEW**



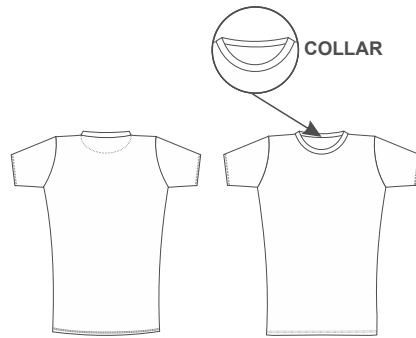
## //Shirt 10 Nicosia Woman

Fabric: A - Manchester or Lock ; B - N1469.

Composition: 100% PES.

Weight: 135 (GR/M<sup>2</sup>).

Size: 6, 8, 10, 12, 14, XS, S, M, L, XL, 2XL, 3XL, 4XL.



**NEW**



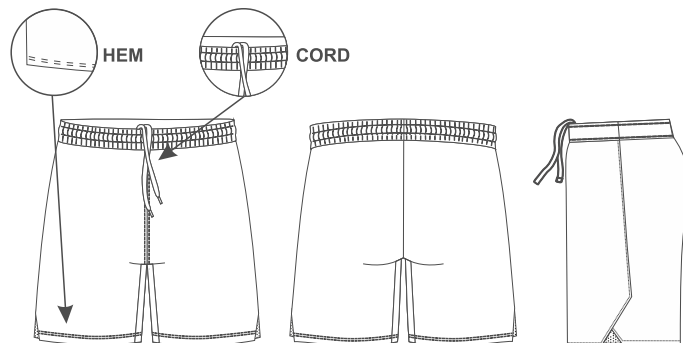
## //Short 1 Bologna Woman

Fabric: Lock.

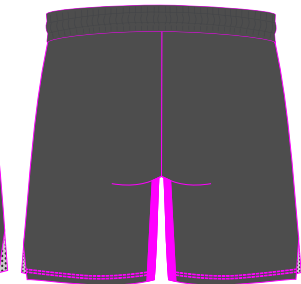
Composition: 100% PES.

Weight: 135 (GR/M<sup>2</sup>).

Size: 6, 8, 10, 12, 14, XS, S, M, L, XL, 2XL, 3XL, 4XL.



**NEW**



## //Shirt 22 Maia Referee

Fabric: Lock.

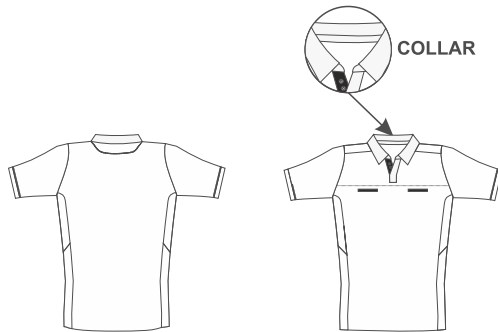
Composition: 100% PES.

Weight: 135 (GR/M<sup>2</sup>).

Inserts in mesh.

Size: 6, 8, 10, 12, 14, XS, S, M, L, XL, 2XL, 3XL, 4XL.

Available colors:  (others)



## //Short 5 Maia Referee

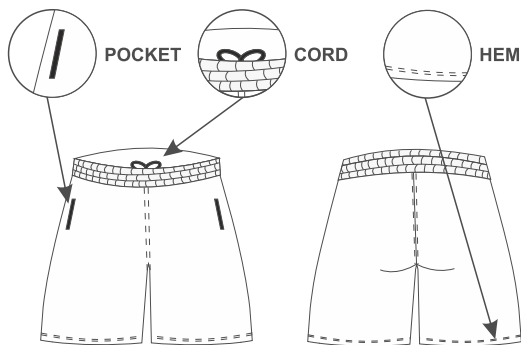
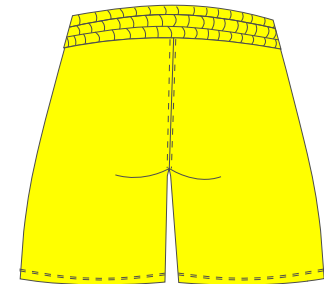
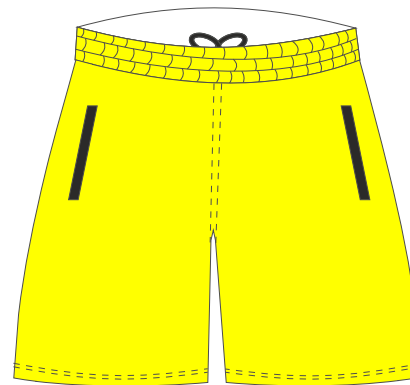
Fabric: Lock.

Composition: 100% PES.

Weight: 135 (GR/M<sup>2</sup>).

Size: 6, 8, 10, 12, 14, XS, S, M, L, XL, 2XL, 3XL, 4XL.

Available colors:  (others)



## // Training Sweatshirt Sagres

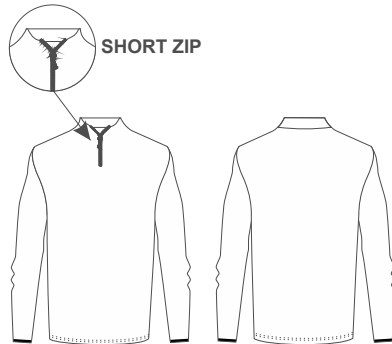
Fabric: Merlin.

Composition: 95% PES. 5% EA.

Weight: 260 (GR/M<sup>2</sup>).

Short Zip.

Size: 6, 8, 10, 12, 14, XS, S, M, L, XL, 2XL, 3XL, 4XL.



## // Training Sweatshirt Viseu

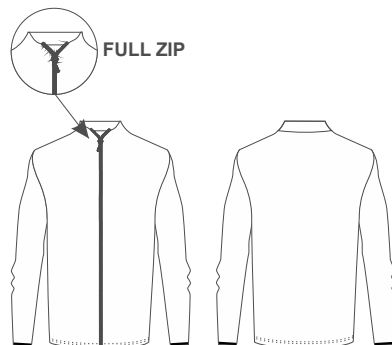
Fabric: Merlin.

Composition: 95% PES. 5% EA.

Weight: 260 (GR/M<sup>2</sup>).

Full Zip.

Size: 6, 8, 10, 12, 14, XS, S, M, L, XL, 2XL, 3XL, 4XL.



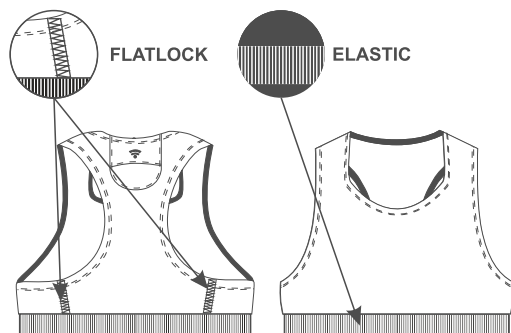
# //Top GPS Aveiro

Fabric: Carmen + Power net.

Composition: 8% EA. 92% PES.

Weight: 195 (GR/M<sup>2</sup>).

Size: 6, 8, 10, 12, 14, XS, S, M, L, XL, 2XL, 3XL, 4XL.



## //Custom Socks/ Standard Socks

Comfortable and high resistance.

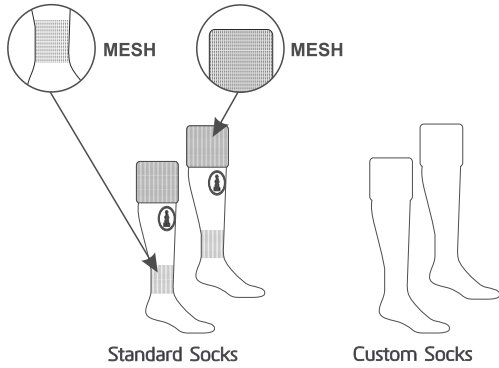
Composition: 97% Poliamida. 3% elastano.

Size: 28-31, 32-35, 36-40, 41-45.

Available Colors:

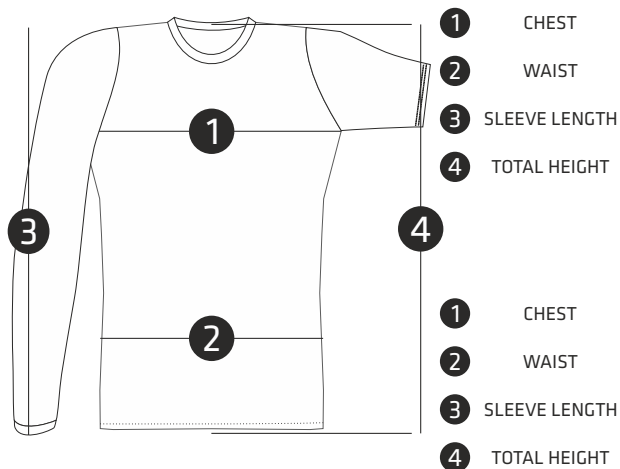


Reservations only for 100 units.



# //Soccer Measurements

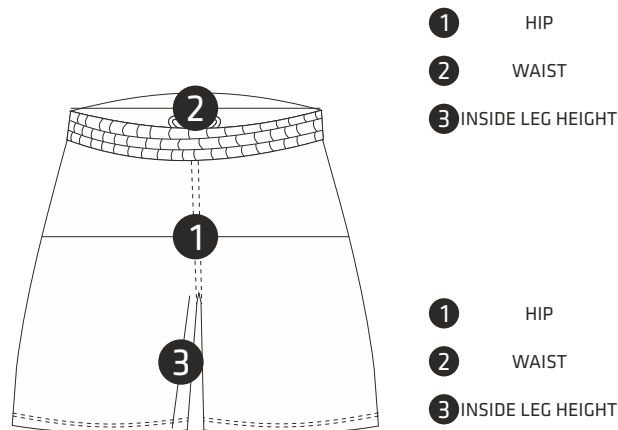
## SHIRTS + TOP GPS - MEN



6 YEARS	8 YEARS	10 YEARS	12 YEARS	14 YEARS	XS	S
58-62 CM	63-67 CM	68-72 CM	73-77 CM	78-82 CM	83-87 CM	88-92 CM
48-52 CM	53-57 CM	58-60 CM	61-65 CM	66-70 CM	71-75 CM	76-80 CM
43,7 CM	47,7 CM	51,7 CM	55,7 CM	58,2 CM	61,7 CM	63,7 CM
50 CM	54 CM	58 CM	62 CM	66 CM	69 CM	71 CM

M	L	XL	2XL	3XL	4XL
93-97 CM	98-102 CM	103-107 CM	108-112 CM	113-117 CM	118-122 CM
81-85 CM	86-90 CM	91-95 CM	96-100 CM	101-105 CM	106-110 CM
64,7 CM	65,7 CM	66,7 CM	67,7 CM	68,7 CM	69,7 CM
73 CM	75 CM	77 CM	79 CM	81 CM	83 CM

## SHORTS - MEN

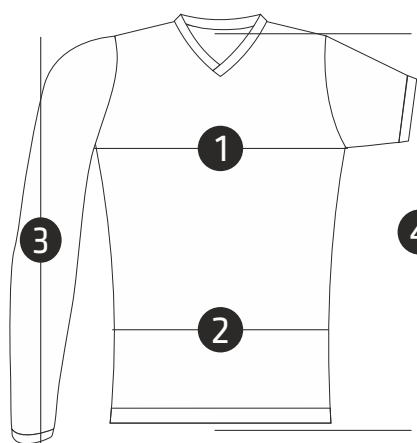


6 YEARS	8 YEARS	10 YEARS	12 YEARS	14 YEARS	XS	S
63-67 CM	68-72 CM	73-77 CM	78-82 CM	83-87 CM	88-92 CM	93-97 CM
59-63 CM	64-68 CM	69-73 CM	74-78 CM	79-83 CM	84-88 CM	84-88 CM
17 CM	17,5 CM	18 CM	18,5 CM	19 CM	19,5 CM	20 CM

M	L	XL	2XL	3XL	4XL
98-102 CM	103-107 CM	108-112 CM	113-117 CM	118-122 CM	123-127 CM
89-93 CM	94-98 CM	99-103 CM	104-108 CM	109-113 CM	114-118 CM
20,5 CM	21 CM	21,5 CM	22 CM	22,5 CM	23 CM

# //Soccer Measurements

## SHIRTS - WOMAN

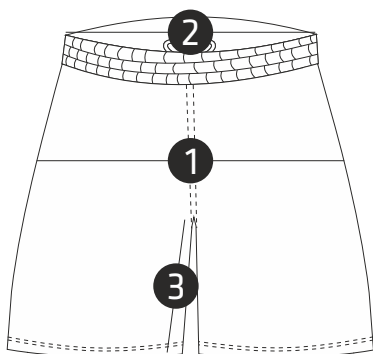


- ① CHEST
- ② WAIST
- ③ SLEEVE LENGTH
- ④ TOTAL HEIGHT

6 YEARS	8 YEARS	10 YEARS	12 YEARS	14 YEARS	XS	S
55-59 CM	60-64 CM	65-69 CM	70-74 CM	75-79 CM	80-84 CM	85-89 CM
50-52 CM	53-55 CM	56-58 CM	59-61 CM	62-64 CM	65-69 CM	70-74 CM
50,2 CM	52,2 CM	53,2 CM	55,5 CM	57,2 CM	58,7 CM	59,2 CM
46 CM	49,5 CM	53 CM	56,5 CM	59 CM	62,5 CM	65,5 CM

M	L	XL	2XL	3XL	4XL
90-92 CM	93-95 CM	96-98 CM	99-101 CM	102-104 CM	105-107 CM
75-76 CM	77-78 CM	79-81 CM	82-84 CM	85-87 CM	88-90 CM
59,7 CM	60,2 CM	60,7 CM	61,2 CM	61,7 CM	62,2 CM
67,5 CM	69 CM	71 CM	73 CM	75 CM	77 CM

## SHORTS - WOMAN



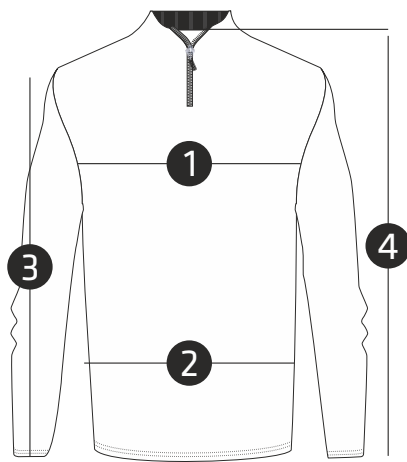
- ① HIP
- ② WAIST
- ③ TOTAL HEIGHT

6 YEARS	8 YEARS	10 YEARS	12 YEARS	14 YEARS	XS	S
46-50 CM	51-55 CM	56-60 CM	61-65 CM	66-70 CM	71-75 CM	76-80 CM
66-70 CM	71-75 CM	76-80 CM	81-83 CM	84-86 CM	87-89 CM	90-95 CM
20,5 CM	22,5 CM	25 CM	27,5 CM	30 CM	32,5 CM	35,5 CM

M	L	XL	2XL	3XL	4XL
81-85 CM	86-88 CM	89-91 CM	92-96 CM	97-101 CM	102-106 CM
96-100 CM	101-103 CM	104-106 CM	107-110 CM	111-115 CM	116-120 CM
37 CM	38,5 CM	40 CM	41,5 CM	43,5 CM	45,5 CM

# //Soccer Measurements

TRAINING SWEATSHIRT SHORT ZIP + FULL ZIP



- ① CHEST
- ② WAIST
- ③ SLEEVE LENGTH
- ④ TOTAL HEIGHT

	6 YEARS	8 YEARS	10 YEARS	12 YEARS	14 YEARS	XS	S
① CHEST	61-64 CM	65-68 CM	69-72 CM	73-76 CM	77-80 CM	81-85 CM	86-90 CM
② WAIST	58-61 CM	62-65 CM	66-69 CM	70-73 CM	74-78 CM	79-83 CM	84-88 CM
③ SLEEVE LENGTH	54,5 CM	58 CM	62,5 CM	66,5 CM	68,5 CM	69,5 CM	70,5 CM
④ TOTAL HEIGHT	55 CM	59 CM	63 CM	67 CM	70 CM	72 CM	75 CM

- ① CHEST
- ② WAIST
- ③ SLEEVE LENGTH
- ④ TOTAL HEIGHT

	M	L	XL	2XL	3XL	4XL
① CHEST	91-94 CM	95-98 CM	99-103 CM	104-107 CM	108-111 CM	112-115 CM
② WAIST	89-92 CM	93-97 CM	98-102 CM	103-107 CM	108-111 CM	112-115 CM
③ SLEEVE LENGTH	71,5 CM	72,5 CM	73,5 CM	74,5 CM	75,5 CM	76,5 CM
④ TOTAL HEIGHT	77 CM	78 CM	80 CM	82 CM	83 CM	84 CM



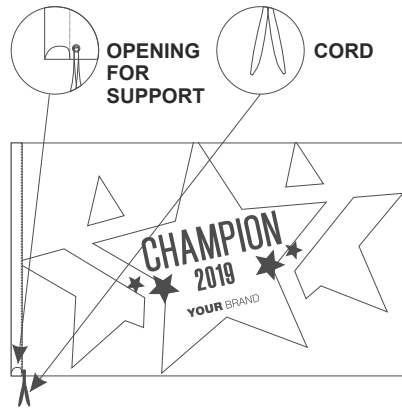
# MERCHANDISING

CUSTOMIZE  
SPORTS  
WEAR



## //Flag – Sublimated

Fabric: TA/microfibra  
Composition: 100% PES.  
Any size.



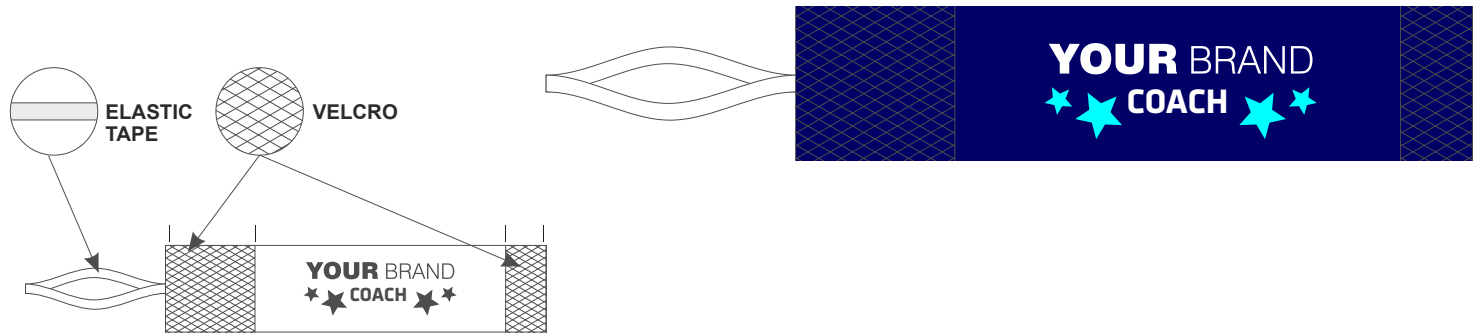
## //Scarf Beja – Sublimated

Strong and lightweight fabric. Quick drying.  
Composition: 100% PES.  
Option: one or two sides print.  
One Size: 20x1.35cm.



# //Arm Band – Sublimated

Fabric:  
Composition: 100% PES.  
Size: 35cm



# //Working Mode

## //Five simple steps



We will send you the layout and our color palettes



Send us your layout for execution of a fabric sample



We sent a sample in real colors and measures for your approval



You send us the final aproval and the order for production.



You receive your production (4/6 weeks)

## //Color palette. Illustration



## //Zip Colors

---

### Visible Zip (5mm)

---

#### COLORS



067 876 803 960 578 820



504 298 501 006 580 918

#### USED IN

- TRACKSUIT JACKETS
- TRAINING SWEATSHIRT
- SWEATSHIRT

#### PRODUCT FEATURES

**Nylon invert zipper, open-end, semi-autolock.**

**Slider with plastic no logo puller with plastic top and bottom stopper.**

---

### Visible Zip (3mm)

---

#### COLORS



067 876 803 960 578 820



504 298 501 006 580 918

#### USED IN

- TRACKSUIT PANTS
- POLOS
- OPTIONAL POCKET
- POCKETS JACKETS

#### PRODUCT FEATURES

**Nylon invert zipper, open-end, semi-autolock.**

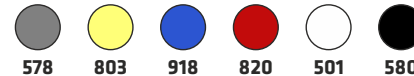
**Slider with plastic no logo puller with plastic top and bottom stopper.**

---

### Invisible Zip (3mm)

---

#### COLORS



578 803 918 820 501 580

#### USED IN

- TRACKSUIT PANTS COTTON
- SHORT COTTON

#### PRODUCT FEATURES

**Nylon invert and invisible zipper, closed-end, semi-autolock.**

**Lace tape with tear puller.**

---

Fradelsport

Fradelsport

Fradelsport

# ABOUT US

We, Fradelsport, a Portuguese company, start our business in 1988, in order to fill some needs in sports world.

Using the best and latest technology allied with our strong know-how, we produce comfortable and irreverent sports equipment, adapted to the best sports performance.

Combining the best designs with top fabrics, is what make us different, presenting the market with several options for all kinds of sports.

Trusting our instincts, we take some risks by trying to make the best choices, all to make our products better and better.

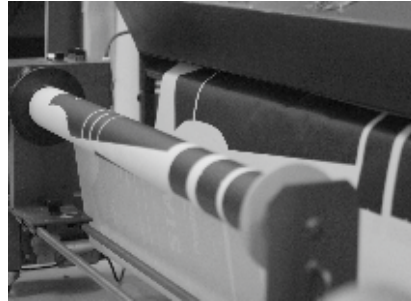
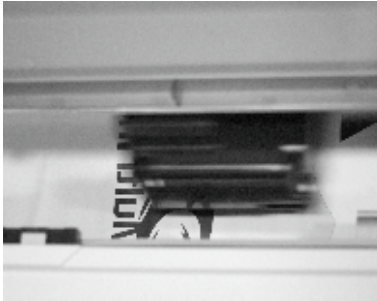
QUALITY, PERFECTION and RIGOR are our commitment!





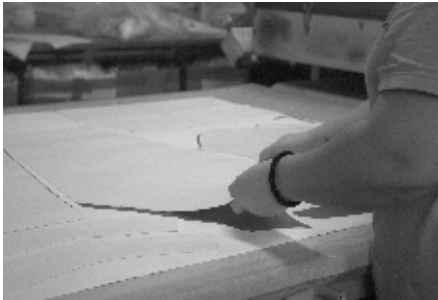
# PRINT

We transfer to the fabrics any idea.



# SUBLIMATION

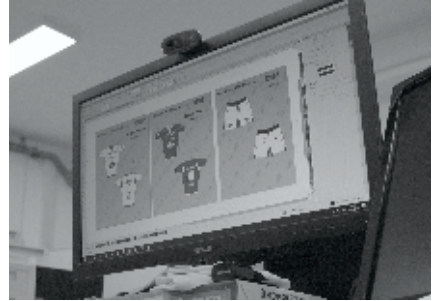
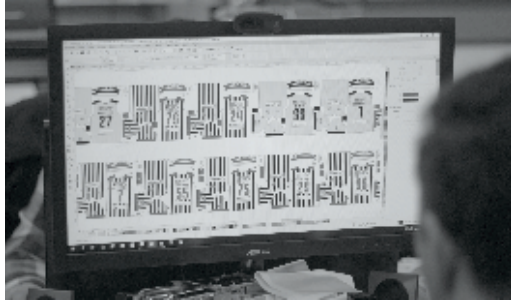
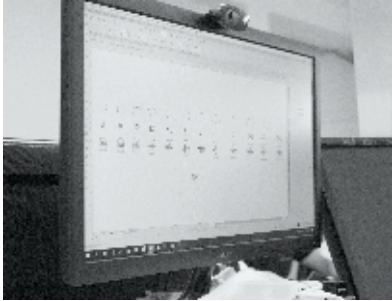
It is the color printing method in fabric that gives you more freedom to create. You can use your own designs on any type of sports equipment without any limits. And all this without losing any capacities or properties of the fabrics.



The sublimation becomes permanent and does not disappear or fade, always keeping the colors bright and alive.



# EXECUTIVE FILE / MOCKUP



We have a team of designers able to create custom and exclusive designs, tailored to your needs.



## CUT

The cutting sector is critical in the production process. Fradelsport have the latest technology that allows achieving the best quality of the product.



# CONFECTION

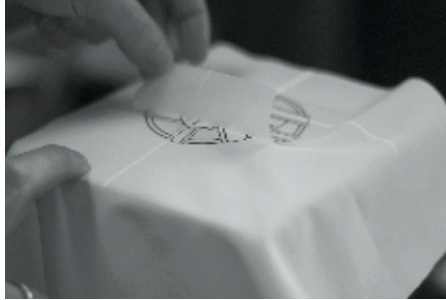


In combination with technology, we have a specialized stitching line, which allows us achieving the best quality..

# TRANSFER



With use the best adhesive materials, resistant to washing and sun exposure.



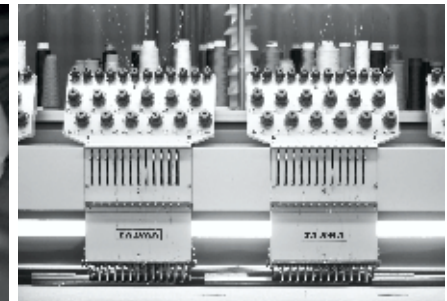
## FLEX CUT FLEX PRINT/CUT

It is often used for numbering and personalization sports equipments.



# EMBROIDERY

Is the most noble way to create design in the equipments.









# Fradelsport

Address: Travessa S. Pedro nº9  
4760-556 Fradelos - V. N. Famalicão | Portugal  
Phone: +351 252 458 048 | +351 961 304 739  
Email: [geral@fradelsport.com](mailto:geral@fradelsport.com)  
Website: [www.fradelsport.com](http://www.fradelsport.com)

**NORTE2020**  
PROGRAMA OPERACIONAL REGIONAL DO NORTE

**PORTUGAL**  
**2020**

 **UNIÃO EUROPEIA**  
Fundo Europeu de Desenvolvimento Regional

